

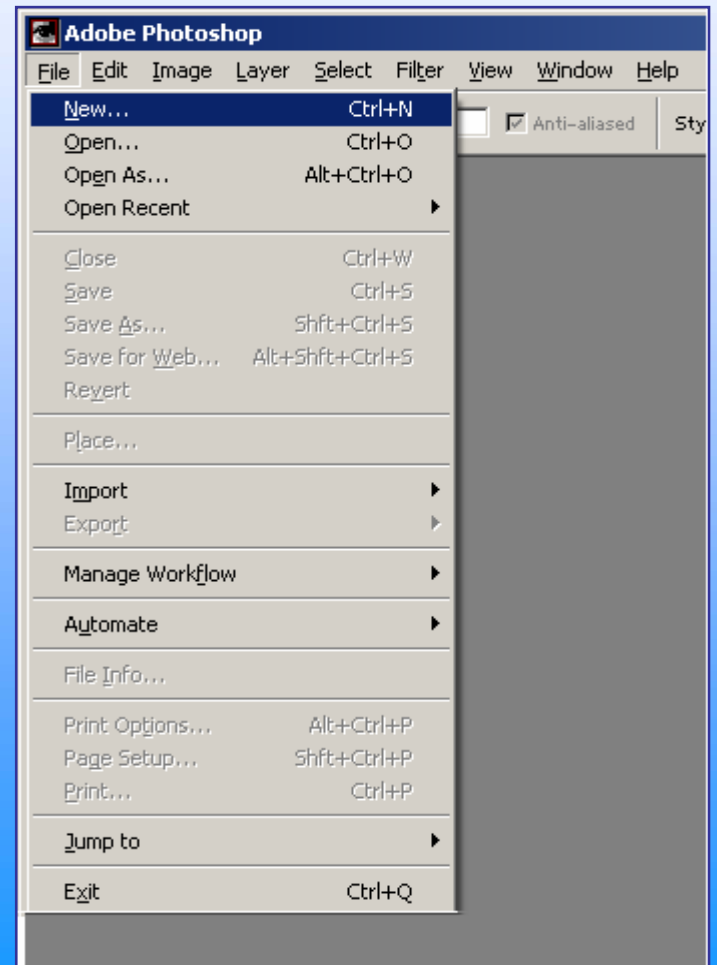
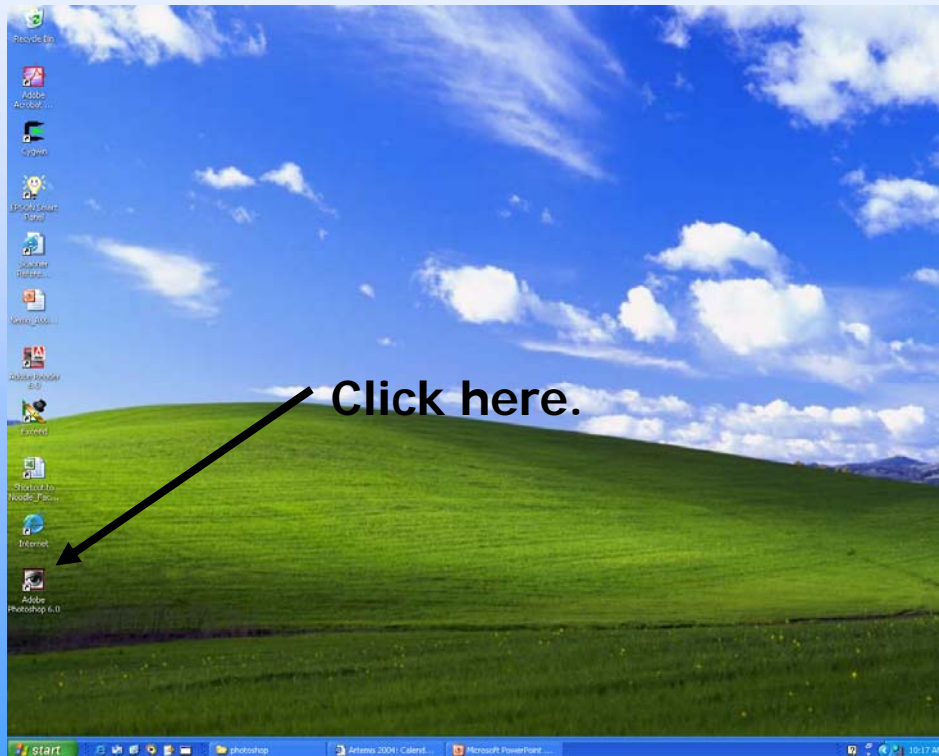


Getting Started



1. Double click on the  "eye" con.

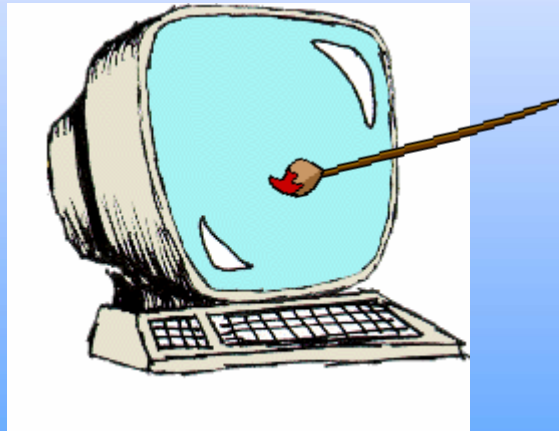
2. Single click on **File**, then **new**, then **OK**.



What is Photoshop?

Photoshop is a program that lets you make pictures.

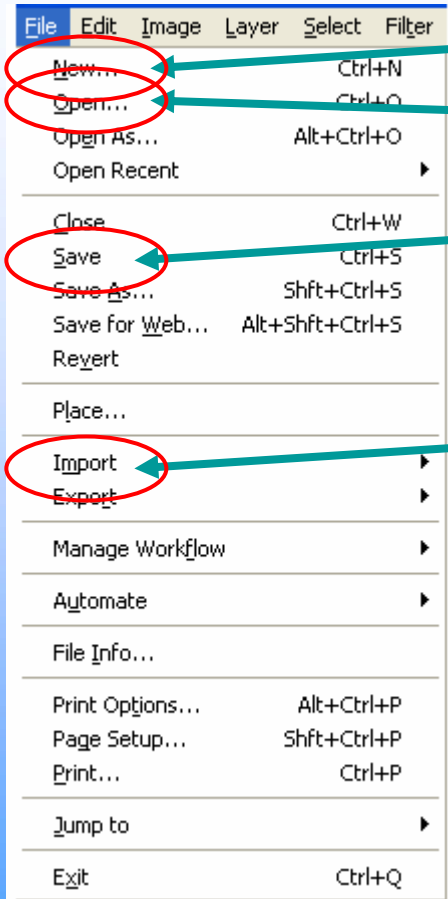
You can put away your markers and crayons. You won't need scissors or glue, Photoshop lets you do it all on the computer.



You don't have to start pictures from scratch. You can download pictures from the internet, or scan in pictures of your friends, or pictures from a magazine. When you open those in Photoshop you can use all of the tools to change the picture however you'd like.



File Menu Tools



Click **NEW** to open new documents.

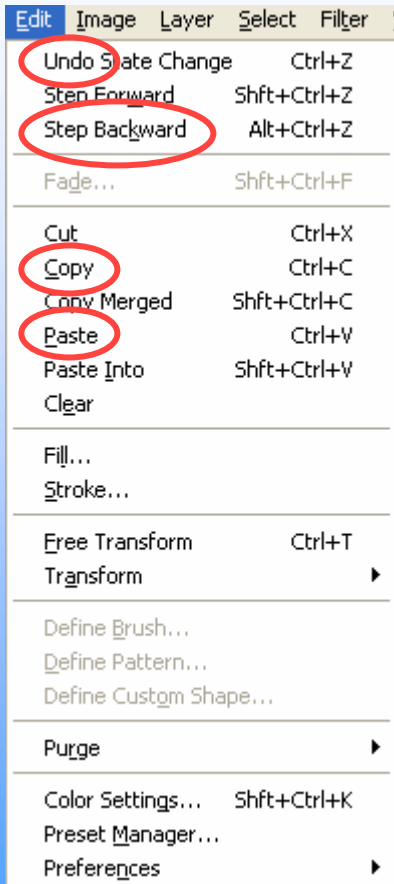
Click **OPEN** to open saved documents.

Click **SAVE** to save your current document.

Click **IMPORT** to load pictures stored on your computer.



Edit Menu Tools



Use **UNDO** to undo the last change you made.

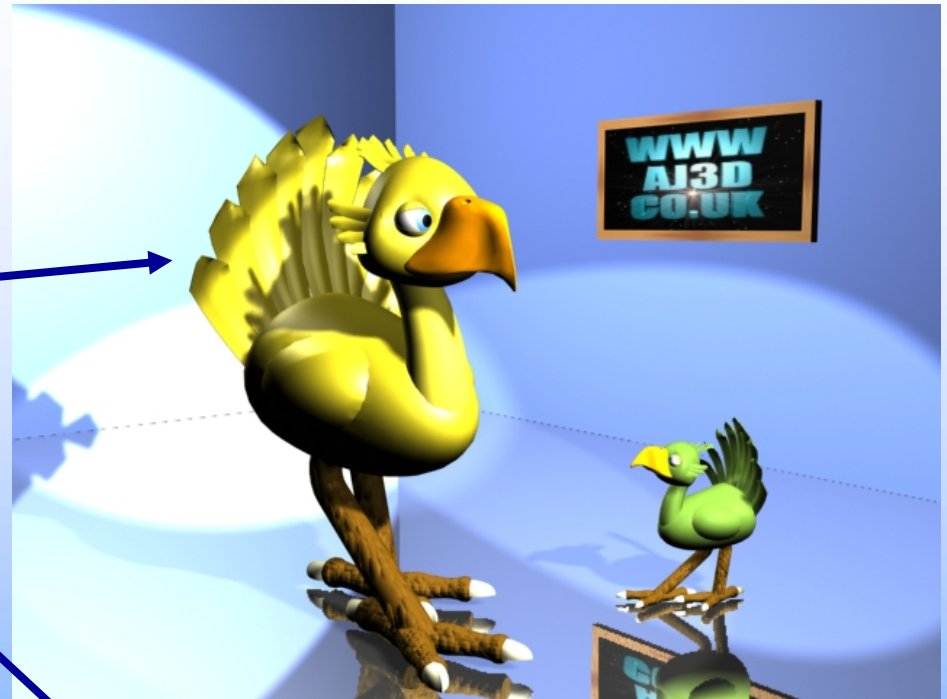
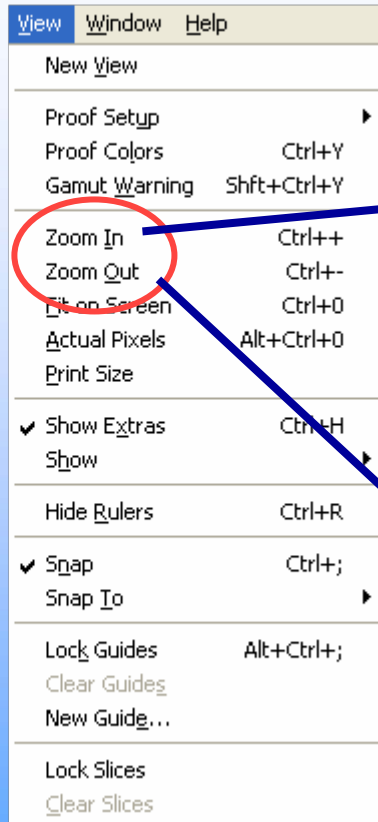
Use **STEP BACKWARD** to undo multiple changes.

Use **COPY** to make a copy of the selected item.

Use **PASTE** to paste down the copied item.



View & Select Menu Tools

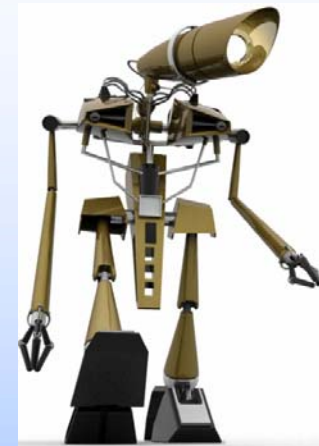


Use **Select -> All** to select everything at once.

Use **Zoom In** and **Zoom Out** to see things better.

Tools

- To select a tool, click on one of these pictures, and the mouse arrow will change into the tool you want to use.

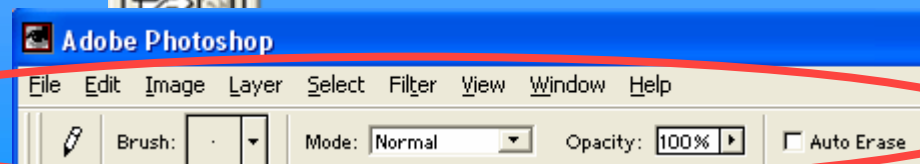


- Right clicking on tools with little triangles in the bottom corner gives you more tool options.



- Rectangle Tool U
- Rounded Rectangle Tool U
- Ellipse Tool U
- Polygon Tool U
- Line Tool U
- Custom Shape Tool U

- When you select a tool, a bar with different options appears at the top of the screen to help you specify exactly how you want to use that tool.



Tools...Dissected 1



Marquee: make rectangular, elliptical, single row, and single column selections.



Move: moves your selections.



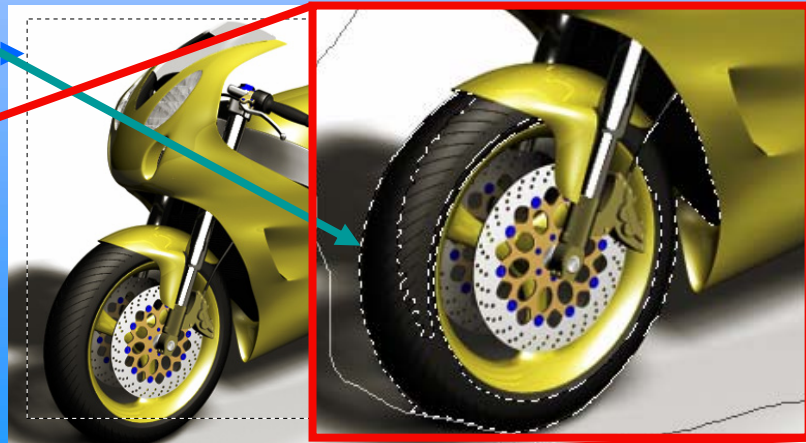
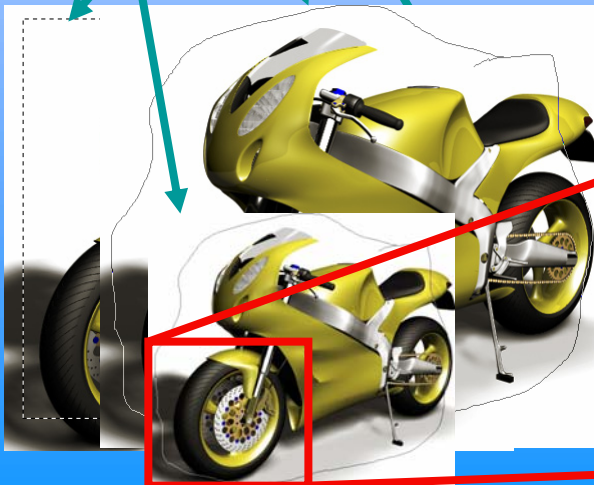
Lasso: make freehand and straight-edged selections.



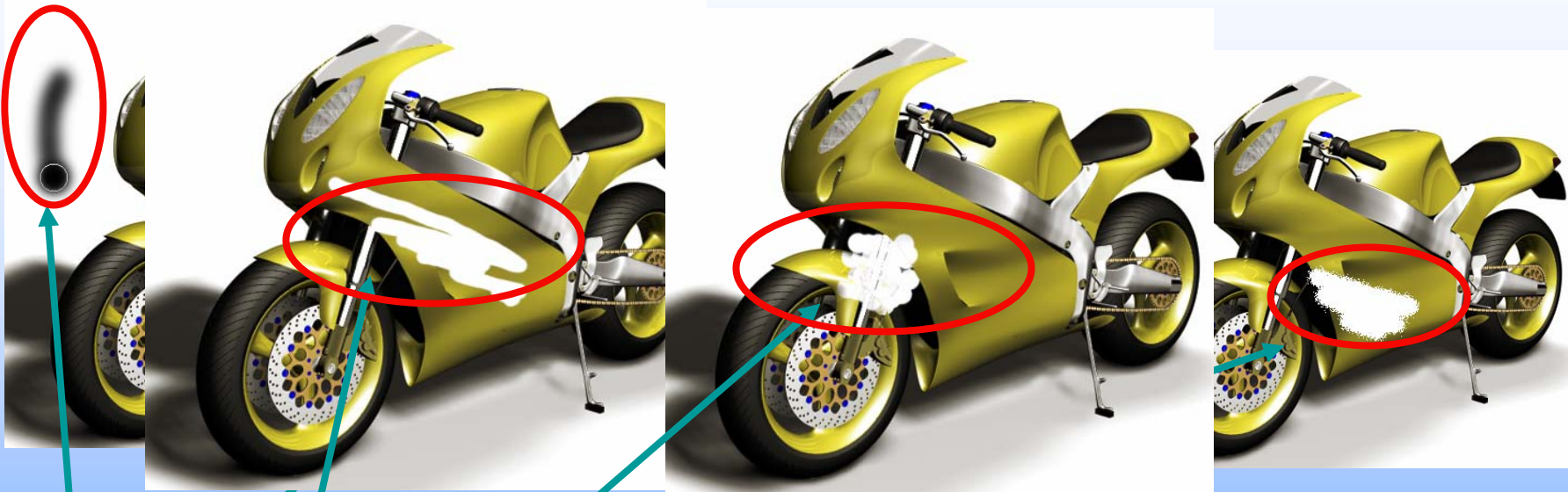
Magic Wand: selects similarly colored areas. Clicking on a particular color in an image causes all the areas of that color to be selected.



Crop: trims images so that you can cut out whichever part of the image you want to use.



Tools...Dissected 1



Airbrush: paints soft-edged strokes.



Pencil: paints hard-edged strokes, like a regular pencil would.



Paintbrush: paints brush strokes.



Eraser: erases parts of an image to a previously saved state.



Background Eraser: erases areas to transparency by dragging.

Tools...Dissected II



The gradient tool colors in your shapes by blending colors. You can make these colors as transparent or opaque as you like.



The paint bucket tool fills similarly colored areas with the foreground color.



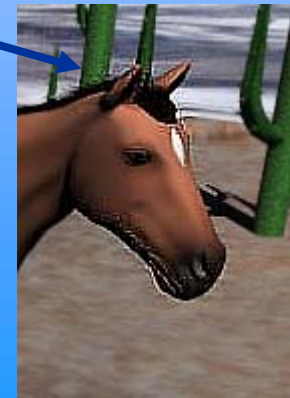
The blur tool blurs hard edges in an image.



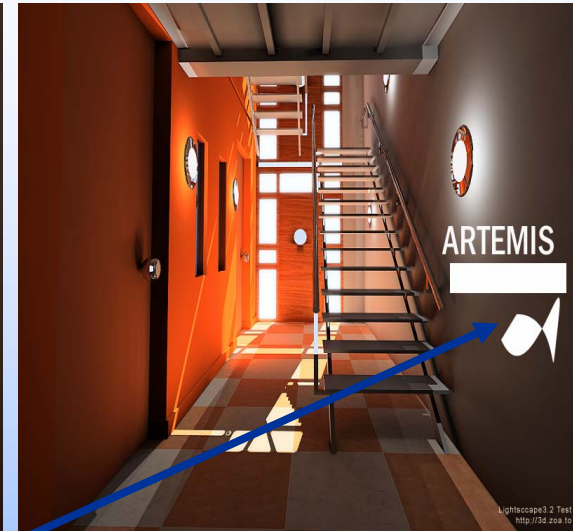
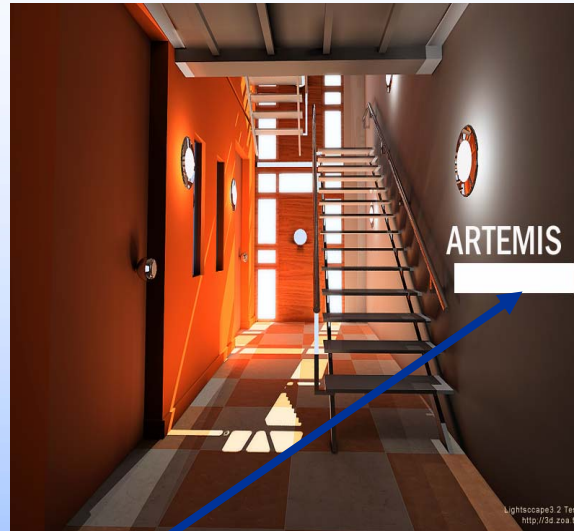
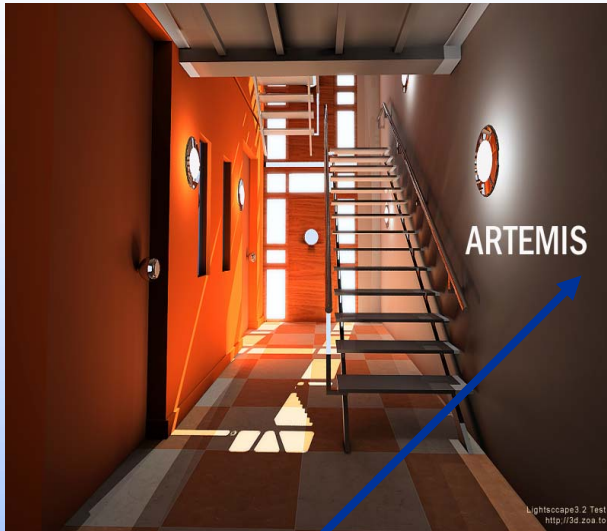
The sharpen tool sharpens soft edges in an image.



The smudge tool smudges the image, just like rubbing a finger on a colored picture would do.



Tools...Dissected II



The type tool creates type on an image. The text font, size and even shape can be changed using the options on top.



The eyedropper tool selects colors in an image.



The shape tool lets you draw shapes from a shape list.



The pen tools let you draw smooth-edged paths, which means that you can draw or outline any shape using this tool.

Other Fun Features 1

Filters: These have varied effects on your image. Experiment with the filters and see which ones you like.

Look at the interesting things you can do to this picture of Beyonce using **filters**.



Fresco



Unsharp mask



Neon glow



Tiles



Emboss



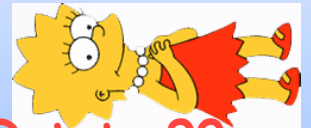
Other Fun Features II

Rotate Canvas under the **I**mage menu will flip the way your picture is facing.

Look how we can move Lisa Simpson.



Flip
horizontal



Rotate 90 ccw

You can join two pictures together by cutting and pasting from the **edit** menu



+



=



Layers

You will probably run into layers while you are cutting and pasting into Photoshop. Usually when you paste an item or create text, it will create a new layer for your latest addition.

For example:



This image actually has three layers, the background (plain black), the text, and the flower that was pasted in.

You can see what layers you have by going to **Windows >> Layers**.

Working with Layers

- You can only apply a filter to one layer at a time.
- To select a layer to work in you can right click with your mouse button and it will show you all the layers at that point, select a layer you wish to edit.



- Layers can be fun to play with but they take some getting used to. Feel free to experiment with them.
- If you do not feel like dealing with layers, you can go to **Layer >> Merge Visible**.

A Final Word

- Photoshop can be a very complicated program to work with. You can learn the most by playing with the different options and experimenting.
- Don't be discouraged if something doesn't come out the way you want it to. Ask for help and we might be able to point you in the right direction.



Now You Try

- Try drawing some shapes and using filters
- Try finding a picture you like online, copying it, and pasting it into Photoshop. Then change it.
- Once you are comfortable in Photoshop, you can move onto your assignment.

Assignment 1:

- Create a 2" x 3.2" nametag for yourself.

Assignment2:

- You want to create a cover for your binder.
- Make your image 7.5" x 10".
- The image must have your name on it.
- You can include anything you like (within reason).

