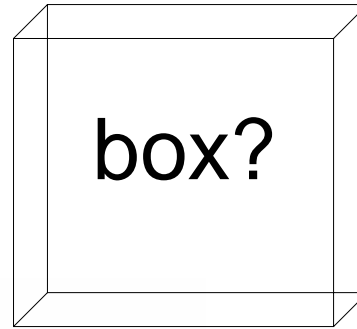


# HARDWARE

What's inside the

box?



# The Main Categories

- Input Devices
- Output Devices
- Processors
- Memory
- Other



Can you think of some input and output devices?

# Input Devices

**Input devices** give a computer new information. They help the computer learn about the outside world, learn the wishes of the user (you), or learn what another computer knows.

Two basic **input devices** are the keyboard and mouse



# Input Devices

Standard Keyboard



Standard Mouse



Ergonomic Keyboard



Wireless Mouse



# Other Input Devices

CD-ROM drive



Zip drive



CDRW Drive



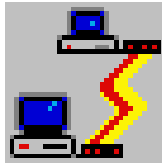
Scanner

# And more Input Devices



Web Camera

Network / WWW



Floppy  
drive

Joystick



PDA



Digital Camera



# Output Devices

**Output devices** tell the world what a computer knows. They show a user or another computer what the computer is working on or has discovered.

A few basic **output devices** are the monitor, printer and speakers.





# Output Devices



Flat Screen Monitor



Standard Monitor

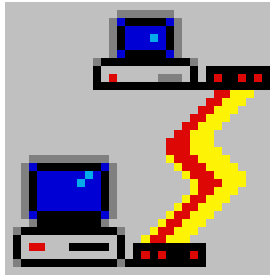


# More Output Devices

CDRW drive



Network / WWW



Zip drive



Floppy disk drive



Can you remember  
which **input devices** are  
also **output devices**?

How is this possible?

# Other Things Outside the Box



Desktop



Laptop



Modem



Floppy Disk



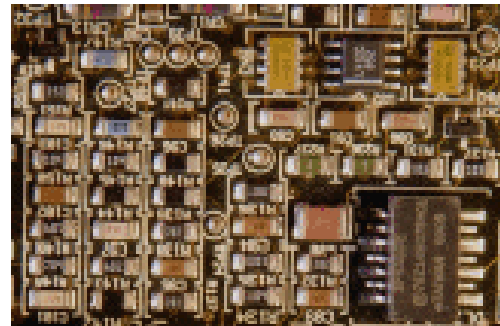
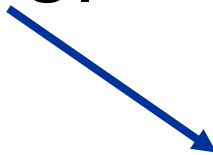
Headphones

# Processor

- A processor is the brain of a computer.



- It tells all the other parts of a computer what to do and when to do it.
- The processor is often called the Central Processing Unit or CPU.



# Memory

Memory is where the processor stores the program it is running and the information the program is using.

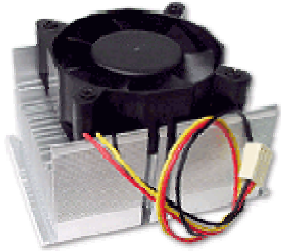
There are two main types of memory:

- Read Only Memory or **ROM**
- Random Access Memory or **RAM**



# Other Things Inside the Box

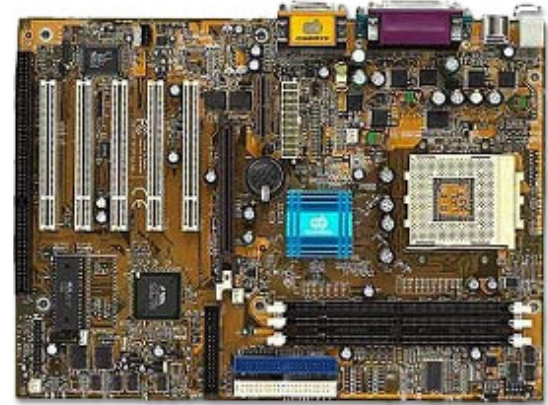
Fan



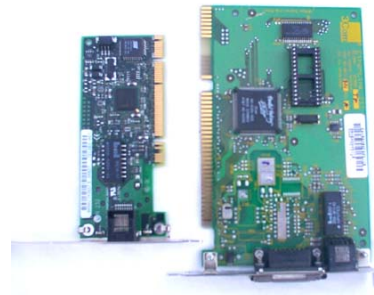
Hard Drive



Motherboard



Video Card



Ethernet Card

Sound Card

