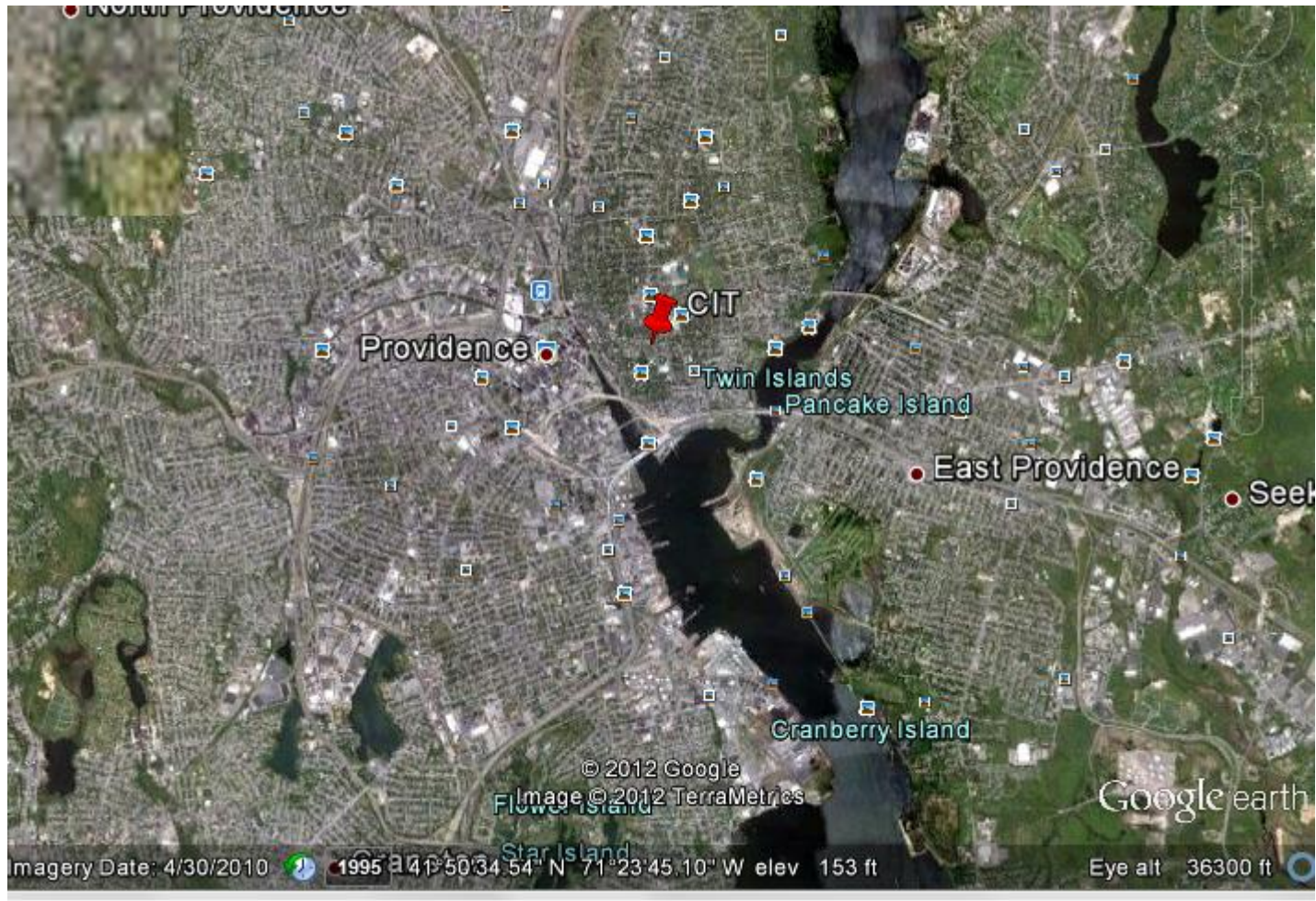


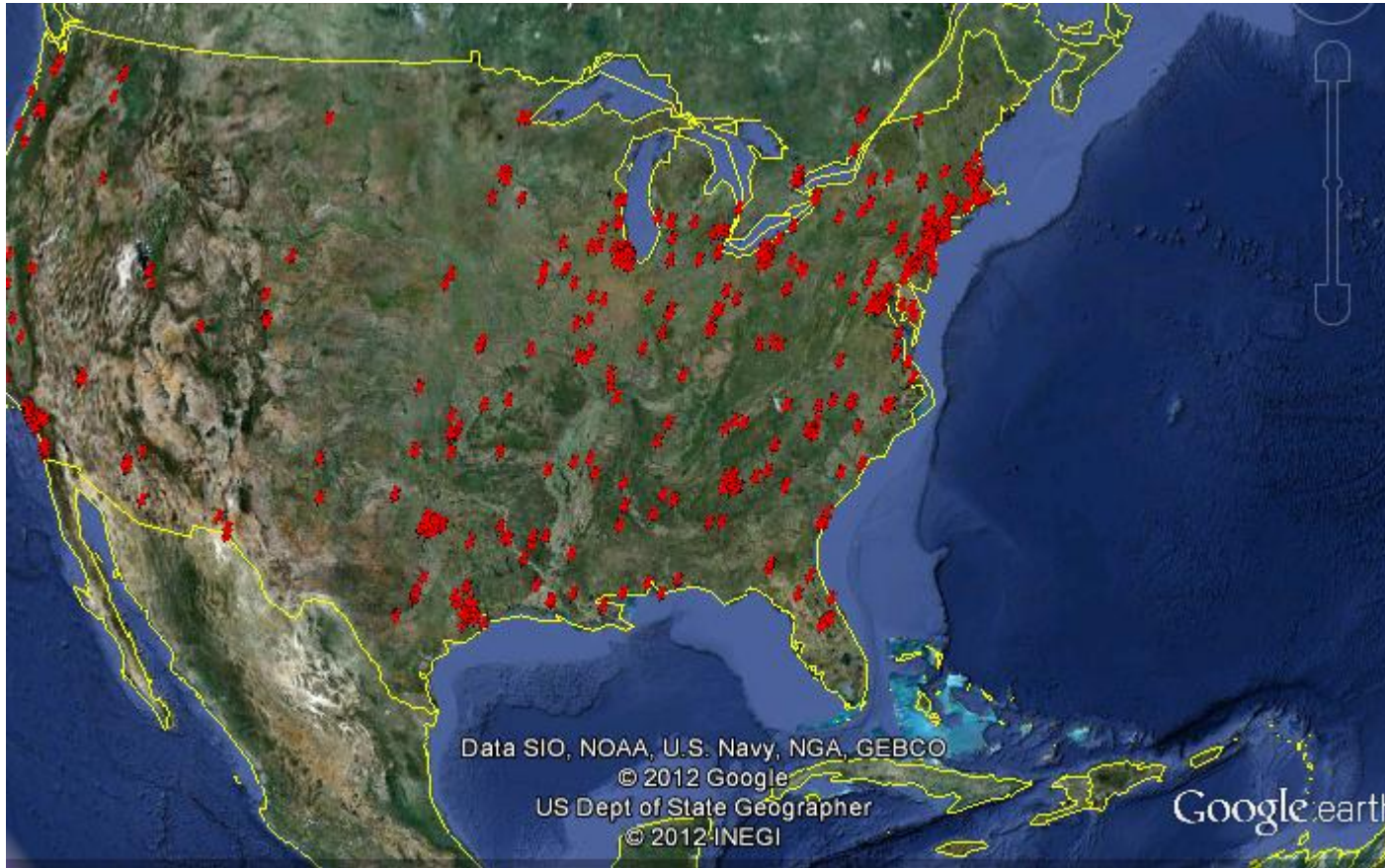
Google Earth

April 12, 2012

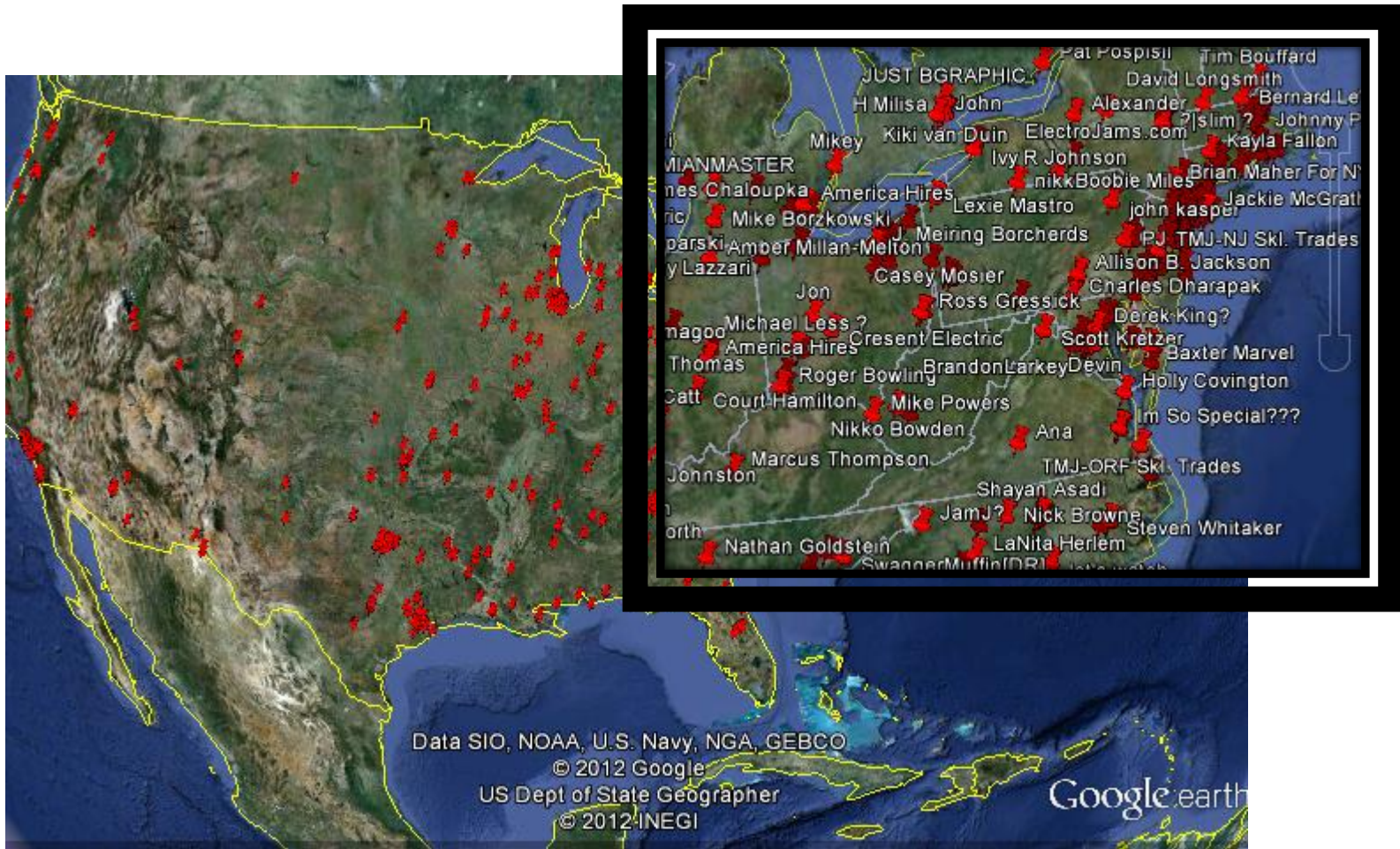
CIT.kml



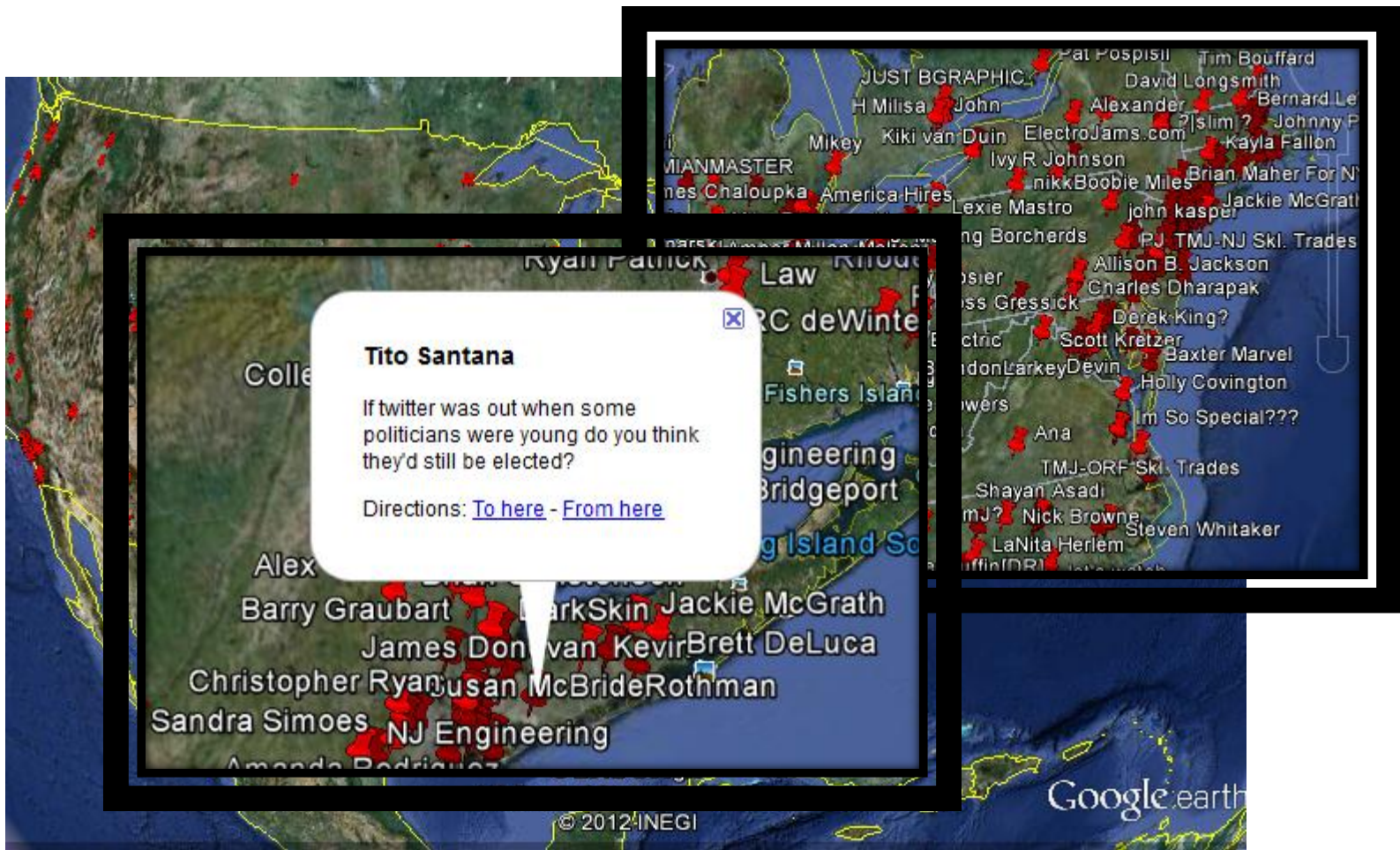
Today's Lecture



Today's Lecture



Today's Lecture



The Goal

List of tweets about Brown



KML File

The Goal

List of tweets about Brown

We have a
list of lists



We have
seen CIT.kml

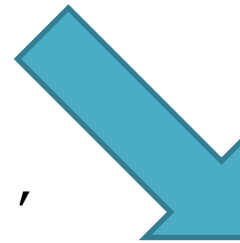
KML File

The Goal

List of tweets about Brown

We have a
list of lists

```
[[id], [time], [loc], [name], [tweet],  
[id], [time], [loc], [name], [tweet],  
[id], [time], [loc], [name], [tweet],  
[id], [time], [loc], [name], [tweet]]
```



```
<?xml ... "?>  
<kml ... ">  
  <Document>  
    <Placemark>  
  
    <name>CIT</name>  
  
    ...
```

We have
seen CIT.kml

KML File

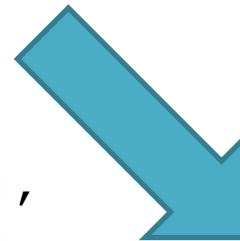
The Goal

How can we break this problem into manageable pieces?

List of tweets about Brown

We have a
list of lists

```
[[id], [time], [loc], [name], [tweet],  
[id], [time], [loc], [name], [tweet],  
[id], [time], [loc], [name], [tweet],  
[id], [time], [loc], [name], [tweet]]
```



```
<?xml ... ">  
<kml ... ">  
  <Document>  
    <Placemark>  
  
    <name>CIT</name>  
  
    ...
```

We have
seen CIT.kml

KML File

The Goal

How can we break this problem into manageable pieces?

List of tweets about Brown

Open KML file to write

Write header of KML File

Write Multiple Placemarks

Write Footer & Close File

Loop through each tweet

Placemark for each tweet

Change Coords, Name, etc.

Remove Illegal Characters

KML File

Another use for triple quotes

```
>>> myString = '''Here is a string  
where I can add line breaks  
by hitting Enter. This might be  
helpful.'''  
>>>
```

Another use for triple quotes

```
>>> myString = '''Here is a string
where I can add line breaks
by hitting Enter. This might be
helpful.'''
>>>
```

1. Assign the contents of CIT.kml to a variable.

Another use for triple quotes

```
>>> myString = '''Here is a string
where I can add line breaks
by hitting Enter. This might be
helpful.'''
>>>
```

1. Assign the contents of CIT.kml to a variable.
2. How could we assign the contents of CIT.kml *with a different pin name* to a variable?

KML File Writer

- First, write a program to take a single tweet and write a KML file. (`SingleTweet.py`)

KML File Writer

- First, write a program to take a single tweet and write a KML file. (`SingleTweet.py`)
- Next, write a program to take a file of tweets and write a KML file. (`GoogleEarthy.py`)

KML File Writer

- First, write a program to take a single tweet and write a KML file. (`SingleTweet.py`)
- Next, write a program to take a file of tweets and write a KML file. (`GoogleEarthy.py`)
- Finally, color the pins three colors:
 - Tweets with the phrase “Chris Brown U”
 - Tweets with the name “Brown University”
 - All Other Tweets