

# Algorithm 3: Filter

October 7, 2020

Introduction to Computer Graphics, Fall 2020

*Due Date:* 6:00 PM EST on Oct 8, 2020. **We will however accept algo handins up until the following day at noon EST (before solutions are released) without penalty due to the timing of Scaling lectures.**

**Instructions:** You may discuss this assignment with other students, but you must abide by the rules stated in the collaboration policy (no notes from any discussions, your handin must be completely written up by you and contain only your own work, 15 minute delay between discussions and writing down any notes of your own) and write the logins of the student(s) you collaborated with next to each problem. Hand in the assignment on Gradescope as a PDF (please make sure the document is anonymous) no later than the due date indicated above.

Be sure to run the signal processing applets (everything from Sampling to Filtering is relevant) before diving into this assignment: <https://cs.brown.edu/courses/cs123/demos.shtml>.

## 1 Duality of Domains

**1.1 [1 point]** The *dual* of the box-like function in Figure 1(a) in the frequency domain is the sinc-like function shown in Figure 1(b) in the spatial domain (note that the box function shown need not have width 1, because there are no labels on the axes)

Sketch the dual of box-like function in Figure 2. Your drawing doesn't need to be perfectly accurate; we just need to see that you get the idea.

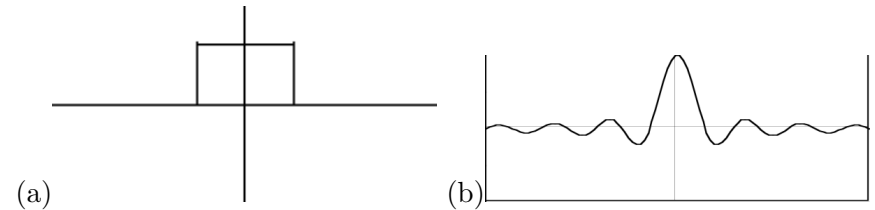


Figure 1: A box-like function and its sinc-like dual

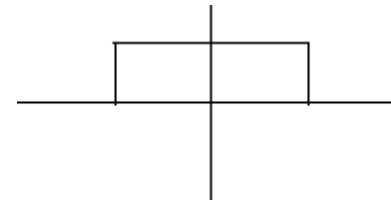


Figure 2: A box-like function, about twice as wide as the one in Figure 1(a).

(Hint: Think about the graphs of  $\sin(x)$  and  $\sin(2x)$ )

**1.2 [2 points]** What do we usually use to approximate the sinc function, and why do we make this approximation when translating these theoretical concepts into code?

A *pixel*, as we defined it in the Brush assignment, was a colored square at a specific point on the image canvas.

**1.3 [1 point]** How has our notion of a pixel changed since Brush?

## 2 Convolution

For the following problems, consider the following function and filter. Remember that convolution is integration of the product of a function and a filter, with the filter reflected about the vertical axis; in formulas,

$$(f \star g)(x) = \int_{-\infty}^{\infty} f(t)g(x-t) dt \quad (1)$$

If the interval where  $f$  is nonzero (its *support*) is finite, and similarly for  $g$ , there may be values of  $x$  for which the two factors of the integrand in Equation 1 are never simultaneously nonzero, i.e., the supports of the two factors don't overlap at all. For other values of  $x$ , the supports might overlap completely. Or they might overlap only in a single point. This problem is all about exploring those possibilities. We'll do that using a function and a filter (playing the roles of  $f$  and  $g$  in Equation 1) shown in Figure 3.

**2.1 [1/2 point each]** What is the value of the function convolved with the filter at...

- $x = 2.5$
- $x = 2.25$
- $x = 1.75$
- $x = 1.25$

**2.2 [1 point]** Draw the function convolved with the filter on a blank graph (with labelled axes).

Let  $F(x)$  and  $G(x)$  be the frequency domain duals of spatial domain functions

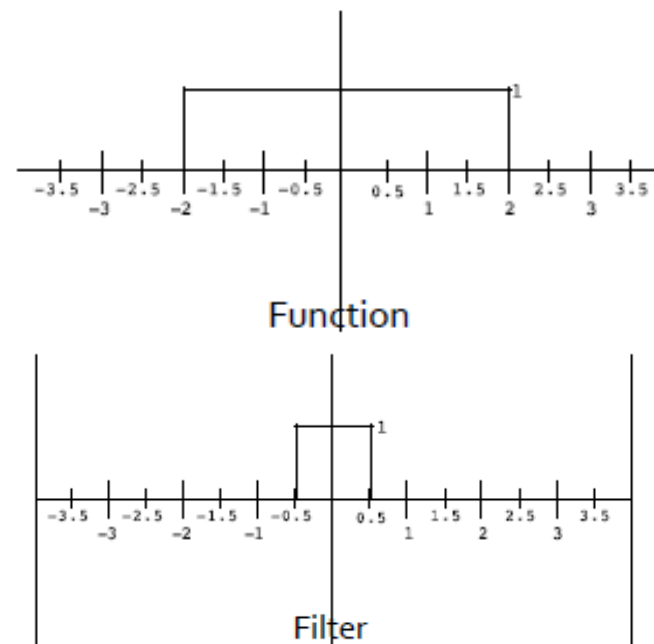


Figure 3: The functions for Problem 2.1

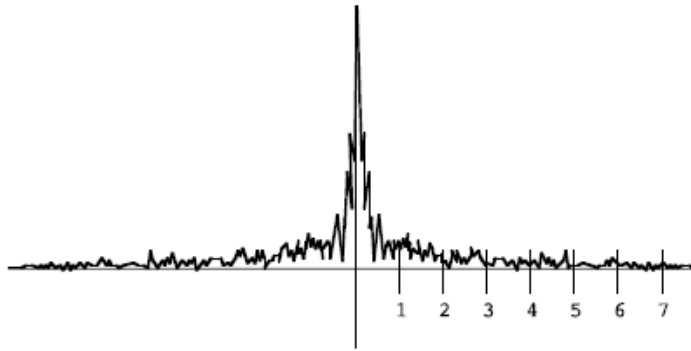


Figure 4: The frequency spectrum of the mandrill image

$f(x)$  and  $g(x)$ , respectively (unrelated to those of the previous problem). Note that  $\star$  is the convolution operator.

**2.3 [1 point]** What is the dual of  $f \star g$ ? Your answer should involve  $F$  and  $G$ .

### 3 Prefiltering

**3.1 [1 point]** If we're sampling a continuous function at a frequency of  $n$  samples per unit, what is the largest frequency we can represent, according to the **Nyquist limit**?

Now, examine the frequency plot of the infamous Mandrill Figure 4.

If you were going to sample this signal at a rate of 8 samples per unit, to avoid aliasing you would use what we know about the **Nyquist limit** to prefilter it.

**3.2 [1 point]** Sketch the new frequency plot after someone has performed this prefiltering step optimally.

## 4 Blur

**4.1 [1 point]** What is *the effect* of an ideal blur (anti-aliasing) filter in the *frequency* domain?

**4.2 [1 point]** What *is* the ideal blur filter in the *spatial* domain?

Now we're going to perform a blur, manually, in the spatial domain. This is how you're probably going to want to implement blur in the Filter assignment, because it's the easiest.

Let's perform a 1-dimensional blur of radius 2 on a row of an image. Assume zero-based indexing into the kernel and image arrays.

**4.3 [2 points]** in the 1-dimensional image, which is represented by an array  $\mathbf{f}$  of floats, consider a point at index  $x$  in the image array. Write the summation equation for the color at point  $x$  in the new, blurred image. You can ignore edge cases for this question. Keep in mind that the kernel width is actually 5, so the center point of the filter array  $\mathbf{g}$  is at  $\mathbf{g}[2]$  (why?).

**4.4 [2 points]** How will you handle cases in your summation where the blur radius extends past the edge of the image (see previous question)? There are multiple correct solutions to this. Be sure to explain how you will keep the image's average brightness constant.

## 5 Scaling [OPTIONAL]

**5.1 [1 point]** What is the filter support width when you scale (up) by a factor of  $n > 1$ ?

**5.2 [1 point]** What is the filter support width when you scale (down) by a factor of  $0 < n < 1$ ?

Recall that back-mapping refers to finding the correct filter placement given a pixel in the output image.

The naive back-map function is  $f(x)_{naive} = \frac{x}{a}$  but the correct back-map function is  $f(x) = \frac{x}{a} + \frac{1-a}{2a}$ .

Suppose we wanted to scale **down** a 9 pixel (1D) image by a factor of 3 ( $a = \frac{1}{3}$ ).

**5.3 [1 point]** Draw a picture to show where we would sample the original image using the naive back-map. Above each sample point include an illustration of the filter.

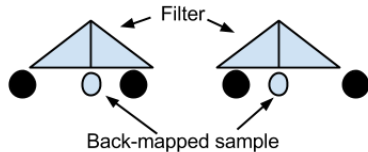
**5.4 [1 point]** Draw another picture to show where we would sample the original image using the correct back-map. Above each sample point include an illustration of the filter.

If you are confused about how and where to draw a filter, look at the example below.

Samples to scale down

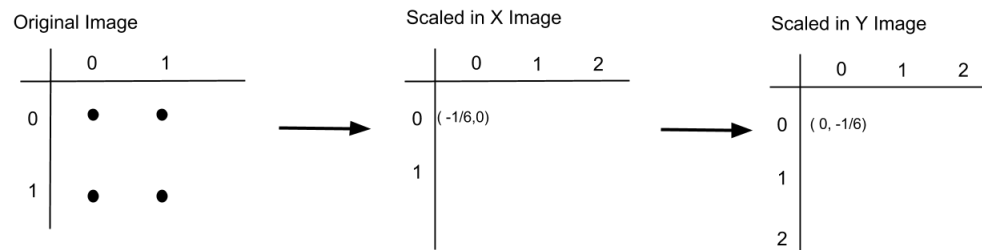


Example back map and filter placement



The first graphic below represents the upper left corner of an image. The numbers on the border are the pixel row and column indices. We want to scale this image up by a factor of 1.5.

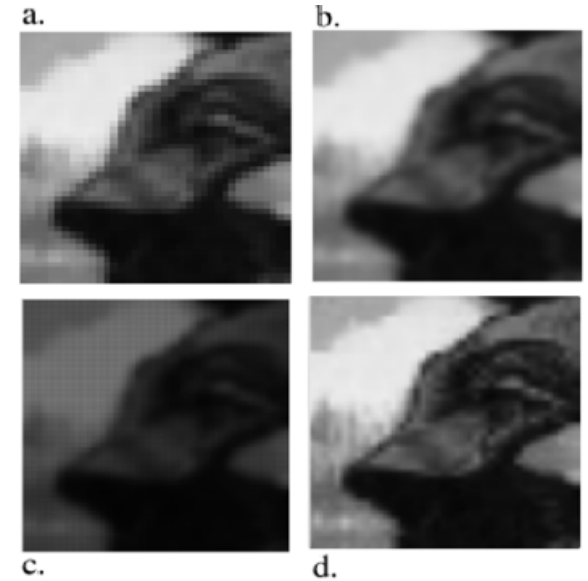
The second graphic represents the image scaled in the x-direction, and the third image represents the second one scaled in the y-direction. The  $(x, y)$  pairs show where the filter must be centered on the previous image in order to calculate the pixel values in the scaled image.



**5.5 [2 points]** Calculate the rest of the  $(x, y)$  pairs above. We've given you

the upper left one.

**5.6 [ $\frac{1}{2}$  point each]** The following are four different scalings of an image. One was scaled using a Gaussian filter, another using a linear (box) filter, another using a triangle filter, and another using a very badly designed filter. Which is which?



- i. **Gaussian**
- ii. **Linear**
- iii. **Triangle**
- iv. **Bad**